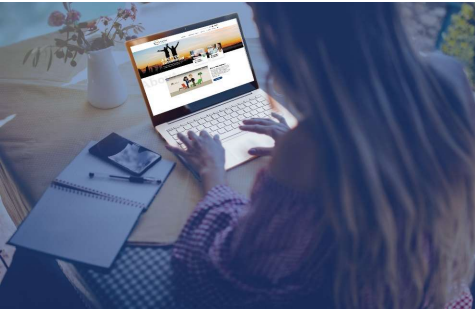


Welcome

Clozapine & LAI Virtual Forum

December 6, 2023 | 4:00 – 4:45 pm ET

The Clozapine & LAI Virtual Forum is a peer-to-peer, interactive dialogue between psychiatrists, nurse practitioners, and other prescribing clinicians. It is informal, no registration required — just join our Zoom call and share your challenges and questions on the month's trending topic around either clozapine or LAIs.



TODAY'S TOPIC:

Comparing Risperidone and Paliperidone LAI Products

MODERATORS

Donna Rolin, PhD, APRN, PMHCNS-BC, PMHNP-BC
Clinical Nurse Expert; Clinical Associate Professor
APA/SMI Adviser; University of Texas at Austin

Robert Cotes, MD
Clinical Physician Expert; Associate Professor
APA/SMI Adviser; Emory University

Megan Ehret, PharmD, MS, BCPP
Clinical Pharmacy Expert; Professor
APA/SMI Adviser; University of Maryland

Discussion Questions for Virtual Forum: Comparing Risperidone and Paliperidone LAI Products

- We now have (soon) 4 Risperidone LAIs and 3 Paliperidone LAIs
 - With which of these new/new-ish LAIs are you familiar or have seen prescribed?
 - Which are you (or colleagues) prescribing and why?
 - Invega Hafyera
 - Perseris
 - Uzedy
 - [Rykindo - FDA approved but not yet available in US market]
- Are you considering renal dosing with Risperidone and Paliperidone LAI agents?
- What are your thoughts on having this many such LAI agents available?

LAI SGAs: What's Different?

	Risperidone Microspheres (Risperdal Consta)	Paliperidone Palmitate Monthly (Invega Sustenna)	Paliperidone Palmitate Every Three Months (Invega Trinza)	Risperidone Subcutaneous (Perseris)	Paliperidone Palmitate Every Six Months (Invega Hafyera)	Risperidone Microspheres (Rykindo)	Risperidone Subcutaneous (Uzedy)
Year approved	2003	2009	2009	2018	2021	2023	2023
Other indications	Bipolar disorder	Schizoaffective disorder	None	None	None	None	None
Injection sites	Deltoid or gluteal	Deltoid or gluteal	Deltoid or gluteal	Subcutaneous	Gluteal	Gluteal	Subcutaneous
Needle gauge	20G or 21G	22G or 23G (23G option for monthly only)	22G	18G	20G	20G	21G
Injection volume	~2 mL	0.25 to 1.5 mL (monthly) 0.88 to 2.6 mL (3 month)	312 mg/mL; range 0.9 mL (273 mg) to 2.6 mL (819 mg)	0.6 mL (90 mg), 0.8 mL (120 mg)	3.5-5 mL	2 mL	0.14-0.7 mL
Injection frequency	Every 2 weeks	Every 4 weeks (every 3 months for the 3-month formulation)	12 weeks	4 weeks	Every six months	Every 2 weeks	Every 4 or 8 weeks
Starting dose	25 mg	234 mg Day 1 + 156 mg Day 8 in deltoid	After treatment with 1-month paliperidone palmitate for at least 4 months: 273 mg, 410 mg, 546 mg, 819 mg (3.5 times the last dose of the once monthly formulation)	90 or 120 mg	After treatment with either 4- 1 month Paliperidone palmitate injections or 1-3 month Paliperidone palmitate injection: 1092 mg or 1560 mg	25 mg	Based on the oral risperidone dose (50 mg, 75mg, 100 mg, 125 mg, 150 mg, 200 mg, or 250 mg)
Maintenance dose	25 mg (max 50 mg)	117 mg (range 39 to 234 mg); dose for 3 month formulation = 3.5 x once monthly dose)	Same as above	90 or 120 mg	Same as above	25 mg (max 50 mg)	Same as above
Oral supplement	Yes	No	No	No	No	Yes	No
Reconstitution	Yes	No	No	Yes	No	Yes	No
Refrigeration	Yes	No	No	No	No	Yes	Yes
Observation	No	No	No	No	No	No	No

Risperdal Consta- Renal Dosing

- Renal Impairment: less ability to eliminate risperidone
 - Moderate to severe renal disease, oral risperidone, clearance of the sum of risperidone and its active metabolite decreased by 60%
- Carefully titrate on oral risperidone before treatment with Risperdal Consta; Risperdal Consta initiated at 25 mg every 2 weeks; 12.5 mg may be appropriate when clinical factors warrant dose adjustments

RISPERDAL CONSTA (risperidone long-acting injection) [Prescribing Information]. Titusville, NJ: Janssen Pharmaceuticals, Inc;
https://imedicalknowledge.veevavault.com/ui/approved_viewer?token=7994-63671f9d-1035-4290-a18b-1c9102cceb15.

Invega Sustenna- Renal Dosing

- Mild renal impairment (CrCL \geq 50 mL/min to < 80 mL/min)
 - Invega Sustenna 156 mg on day 1, Invega Sustenna 117 mg one week later
 - Recommended monthly maintenance dose of 78 mg, adjust monthly maintenance dose based on tolerability and/or efficacy with strengths of 39 mg, 78 mg, 117 mg, or 156 mg
- Invega Sustenna not recommended in patients with moderate or severe renal impairment (CrCl <50 mL/min)

Titration Guidance for Renal Dosing with Newer Agents

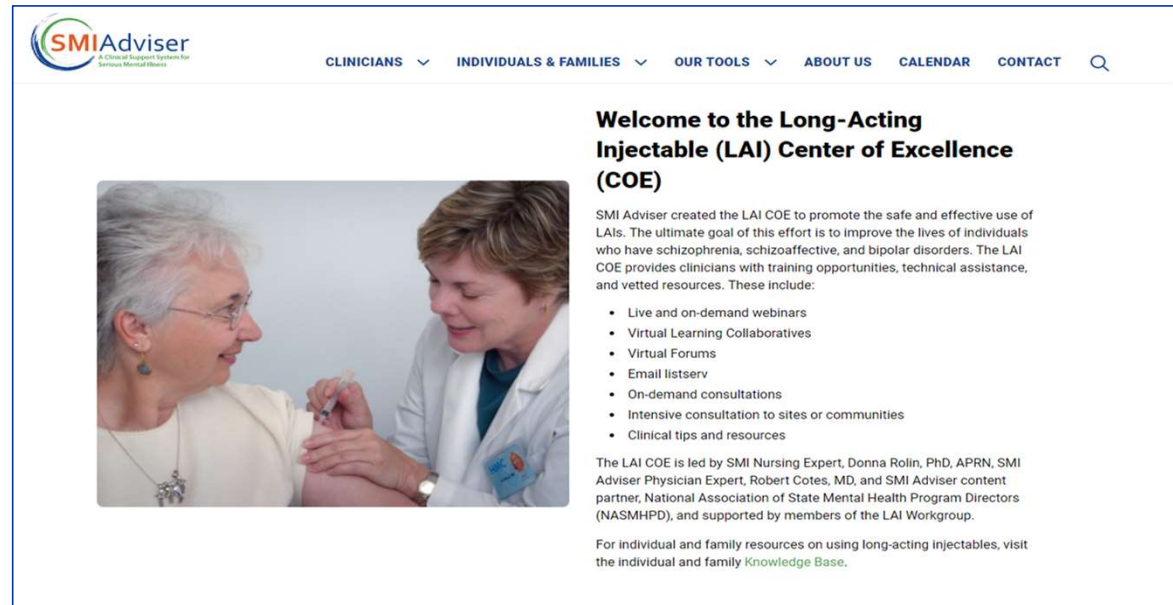
- Perseris - Titrate with oral risperidone (up to at least 3 mg daily) before initiating treatment
- Rykindo - Titrate with oral risperidone (up to at least 2 mg daily) prior to initiating treatment
- Uzedy - Titrate with oral risperidone (up to at least 2 mg daily) before initiating treatment

SMI ADVISER ASSETS ON LONG-ACTING INJECTABLES

Long-Acting Injectable Center of Excellence



SCAN ME!



The screenshot shows the SMI Adviser website interface. At the top, there is a navigation menu with links for CLINICIANS, INDIVIDUALS & FAMILIES, OUR TOOLS, ABOUT US, CALENDAR, and CONTACT. The main heading reads "Welcome to the Long-Acting Injectable (LAI) Center of Excellence (COE)". Below the heading is a photograph of a healthcare professional in a white lab coat administering an injection to an elderly patient. To the right of the photo, there is a list of services provided by the COE, including live webinars, virtual learning collaboratives, virtual forums, email listserv, on-demand consultations, intensive consultations to sites or communities, and clinical tips and resources. At the bottom of the page, there is a paragraph describing the leadership of the COE and a link to the individual and family Knowledge Base.

Welcome to the Long-Acting Injectable (LAI) Center of Excellence (COE)

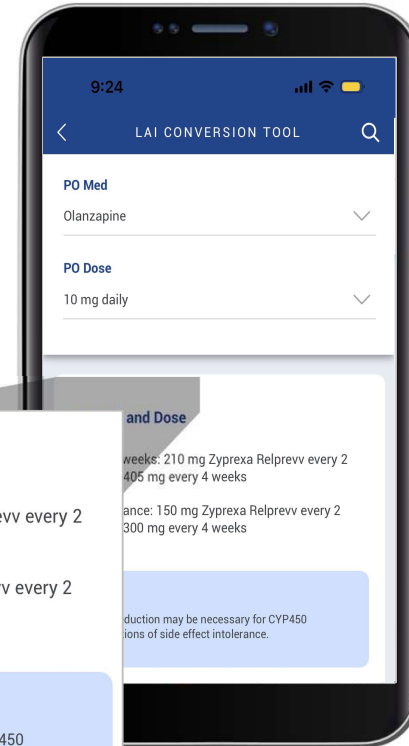
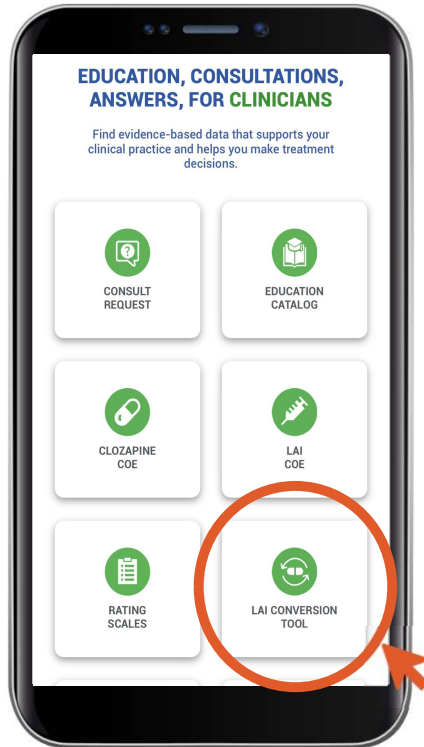
SMI Adviser created the LAI COE to promote the safe and effective use of LAIs. The ultimate goal of this effort is to improve the lives of individuals who have schizophrenia, schizoaffective, and bipolar disorders. The LAI COE provides clinicians with training opportunities, technical assistance, and vetted resources. These include:

- Live and on-demand webinars
- Virtual Learning Collaboratives
- Virtual Forums
- Email listserv
- On-demand consultations
- Intensive consultation to sites or communities
- Clinical tips and resources

The LAI COE is led by SMI Nursing Expert, Donna Rolin, PhD, APRN, SMI Adviser Physician Expert, Robert Cotes, MD, and SMI Adviser content partner, National Association of State Mental Health Program Directors (NASMHPD), and supported by members of the LAI Workgroup.

For individual and family resources on using long-acting injectables, visit the individual and family [Knowledge Base](#).

LAI DOSE CONVERSION TOOL



LAI Med and Dose

- Initial 8 weeks: 210 mg Zyprexa Relprevv every 2 weeks or 405 mg every 4 weeks
- Maintenance: 150 mg Zyprexa Relprevv every 2 weeks or 300 mg every 4 weeks

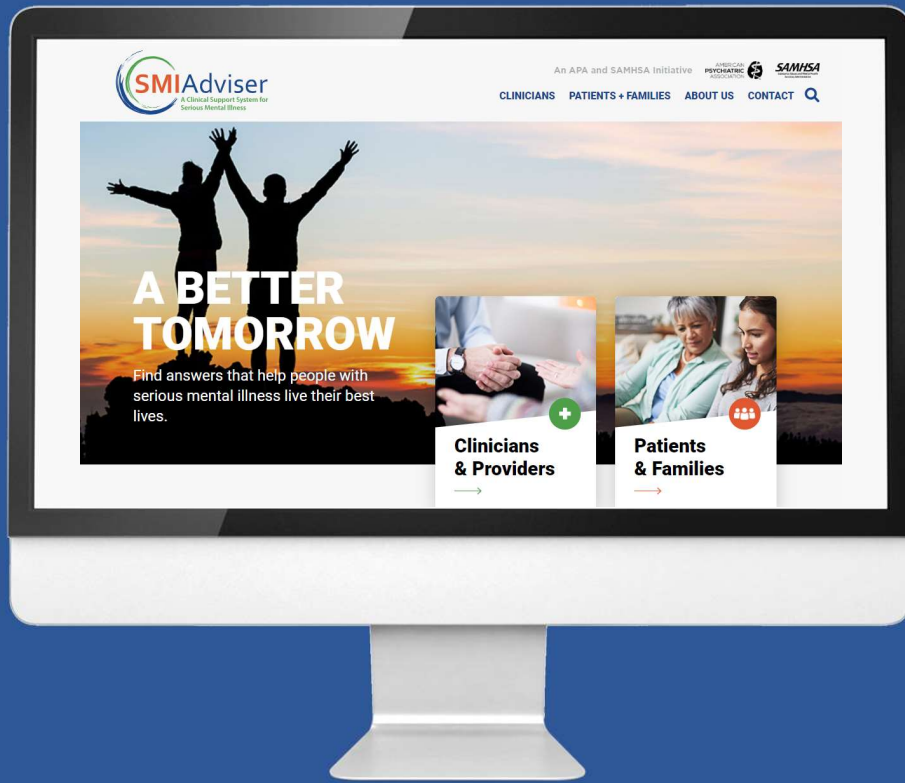
Hint

Dose reduction may be necessary for CYP450 interactions of side effect intolerance.

Download at SMIAdviser.org/app

FEEDBACK

Please help us improve the Clozapine & LAI Virtual Forum by completing this survey:
<http://smiadviser.org/forumfeedback>



Pre-submit Cases

www.smiadviser.org/vfcases

UPCOMING VIRTUAL FORUM

1/3/24 @4:00-4:45 PM ET

Clozapine and Aggressive Behavior

For additional questions and resources – join the Clozapine and LAI Centers of Excellence Exchange Community

- www.smiadviser.org/cloz_lai_signup

An APA and SAMHSA Initiative

