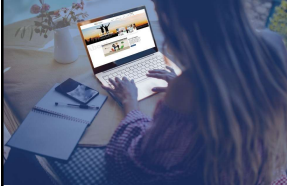


## WELCOME



# Clozapine & LAI Virtual Forum

June 2023 | 4:00 – 4:45 pm ET

The Clozapine & LAI Virtual Forum is an all-new, peer-to-peer, interactive dialogue between psychiatrists, nurse practitioners, and other prescribing clinicians.

It is informal, no registration required — just join our Zoom call and share your challenges and questions on the month's trending topic around either clozapine or LAIs.

## TODAY'S TOPIC: Making Sense of the Long-Acting Injectable (LAI) Antipsychotic Medication Research

© 2019 American Psychiatric Association. All rights reserved.

1

An APA and SAMHSA Initiative



1

## MODERATORS

### Leon Ravin, MD

Dr. Leon Ravin is a Clinical Professor at the University of Nevada Las Vegas School of Medicine and the Statewide Psychiatric Medical Director for the Division of Public and Behavioral Health, State of Nevada. Dr. Ravin serves on the Executive Committee of the Medical Directors Council of the National Association of State Mental Health Program Directors, on the Conference Committee for the National Psychopharmacology Update, and on the SMI Adviser LAI Workgroup.

### Donna Rolin, PhD, APRN

SMI Adviser Nursing Expert; University of Texas, Austin

Dr. Donna Rolin is Clinical Associate Professor and the Director of the Psychiatric Mental Health Nurse Practitioner program at the University of Texas with 23 years of experience in psychiatric nursing, including inpatient, community, forensic, and older adult settings.

### Robert Cotes, MD

SMI Adviser Physician Expert; Emory University

Dr. Robert Cotes, MD, is an Associate Professor at Emory University School of Medicine in the Department of Psychiatry and Behavioral Sciences. He has interest in clozapine, characterizing persistent symptoms of schizophrenia, understanding cardiometabolic side effects of antipsychotic medications, and first episode psychosis.

### Megan Ehret, PharmD, MS, BCPP

SMI Adviser Pharmacy Consultant, University of Maryland

Dr. Megan Ehret is a Professor at University of Maryland School of Pharmacy in the Department of Practice, Sciences, and Health Outcomes Research and is Co-Director of the Mental Health Program. She is a Past-President of the American Association of Psychiatric Pharmacists. Her current interests include psychotropic medication adherence and the incorporation of the psychiatric pharmacist in practice.

© 2023 American Psychiatric Association. All rights reserved.

2

An APA and SAMHSA Initiative



2

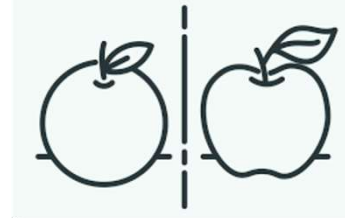
## Discussion Questions for Virtual Forum: Making Sense of the LAI Antipsychotic Medication Research

- Where do you get most of your information about LAI efficacy or selection?
- How is “efficacy defined?”
  - When looking at LAI efficacy evidence, the outcome measures vary.
- Existing LAI research, consider who is included / excluded
  - Do those studied match (apply to) your patient population?

3

## Challenges in Gathering Evidence

Are we comparing apples to apples?



- So few LAIs, so many PO antipsychotics
- Measuring the same outcomes?
- In vitro = in vivo?
- RTC designs – who included, excluded?
  - Length of studies?
  - Secondary data analyses?

4

## Efficacy and effectiveness of depot versus oral antipsychotics in schizophrenia: synthesizing results across different research designs.

A PubMed literature review targeted English-language studies (2000-2011) with information on relapse, hospitalization, or all-cause discontinuation for depot and oral antipsychotic treatment arms in schizophrenia.

13 relevant studies included 5 Randomized Control Trials (RCTs), 4 prospective observational studies, and 4 retrospective observational studies.

Age- and gender-adjusted risk ratios (RRs) (depot/oral) were calculated for the identified endpoints (hospitalization, relapse, discontinuation).

**Efficacy and Effectiveness of Depot Versus Oral Antipsychotics in Schizophrenia: Synthesizing Results Across Different Research Designs**

*J Clin Psychiatry* 2013;74(6):568-575

© 2013 American Psychiatric Association. All rights reserved.

5

An APA and SAMHSA Initiative

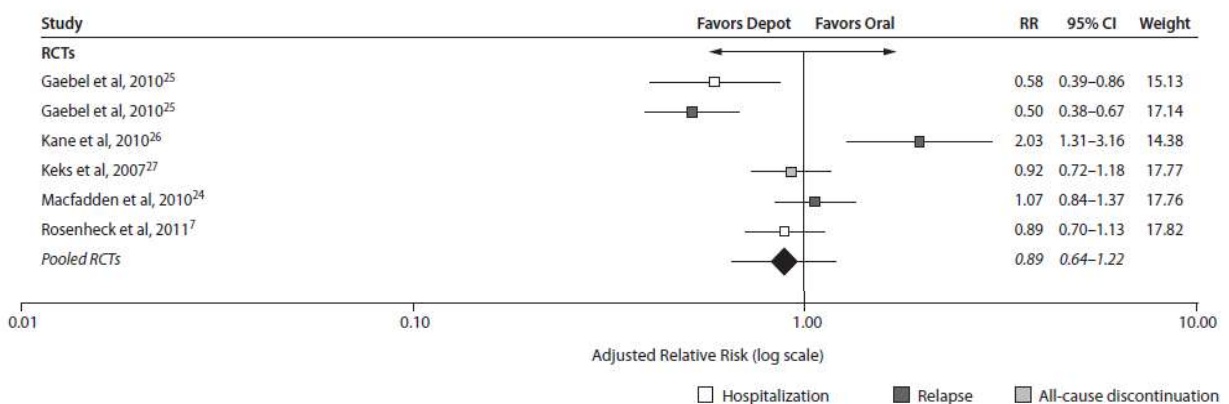


5

## Efficacy and effectiveness of depot versus oral antipsychotics in schizophrenia: synthesizing results across different research designs. (Cont. 1)

Effectiveness of Depot vs Oral Antipsychotics

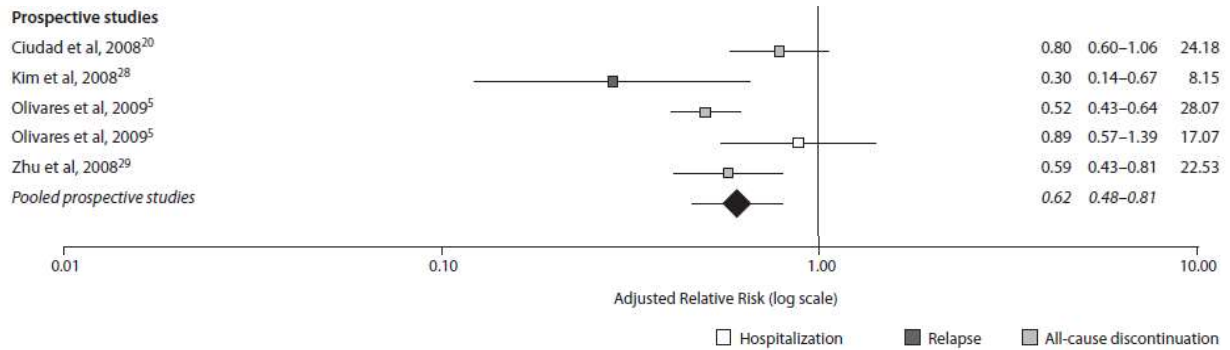
Figure 2. Meta-Analysis of Adjusted Risk Ratios, by Study Design



Abbreviations: RCT = randomized controlled trial, RR = risk ratio.

6

## Efficacy and effectiveness of depot versus oral antipsychotics in schizophrenia: synthesizing results across different research designs. (Cont. 2)



7 © 2023 American Psychiatric Association. All rights reserved.

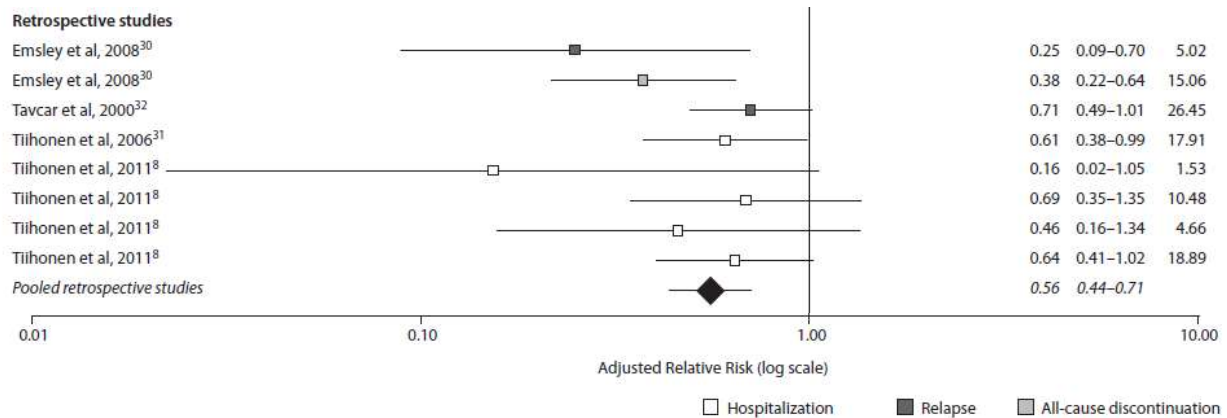
7

An APA and SAMHSA Initiative



7

## Efficacy and effectiveness of depot versus oral antipsychotics in schizophrenia: synthesizing results across different research designs. (Cont. 3)



8 © 2023 American Psychiatric Association. All rights reserved.

8

An APA and SAMHSA Initiative



8

# Efficacy and effectiveness of depot versus oral antipsychotics in schizophrenia: synthesizing results across different research designs.(Cont. 4)

Possible explanation for the difference in findings:

## RCTs

- (+) randomization is the best strategy to estimate treatment effects from a statistical perspective
- (-) do not fully reflect other aspects of how oral therapies are used in general clinical practice

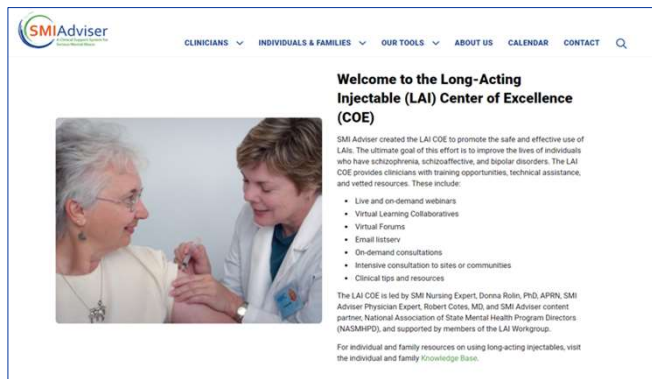
## Observational studies

- (+) more realistic treatment settings
- (-) possible lack of control for other possible confounding factors and selection bias.

## SMI ADVISER ASSETS ON LONG-ACTING INJECTABLES



SCAN ME!



**Welcome to the Long-Acting Injectable (LAI) Center of Excellence (COE)**

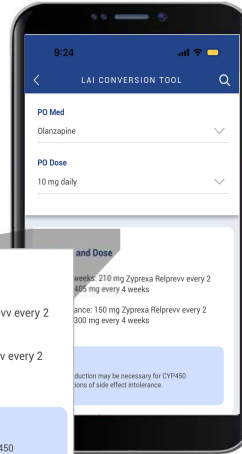
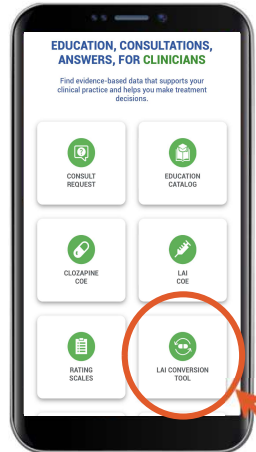
SMI Adviser created the LAI COE to promote the safe and effective use of LAIs. The ultimate goal of this effort is to improve the lives of individuals who have schizophrenia, schizoaffective, and bipolar disorders. The LAI COE provides clinicians with training opportunities, technical assistance, and vetted resources. These include:

- Live and on-demand webinars
- Virtual Learning Collaboratives
- Virtual Forums
- Email listserv
- On-demand consultations
- Intensive consultation to sites or communities
- Clinical tips and resources

The LAI COE is led by SMI Nursing Expert, Donna Rolin, PhD, APRN, SMI Adviser Physician Expert, Robert Coles, MD, and SMI Adviser content partner, National Association of State Mental Health Program Directors (NASMHPD), and supported by members of the LAI Workgroup.

For individual and family resources on using long-acting injectables, visit the individual and family Knowledge Base.

## LAI DOSE CONVERSION TOOL



**LAI Med and Dose**

- Initial 8 weeks: 210 mg Zyprexa Relprevv every 2 weeks or 405 mg every 4 weeks
- Maintenance: 150 mg Zyprexa Relprevv every 2 weeks or 300 mg every 4 weeks

**Hint**

Dose reduction may be necessary for CYP450 interactions of side effect intolerance.

Download at [SMIAdviser.org/app](http://SMIAdviser.org/app)

© 2019 American Psychiatric Association. All rights reserved.

11

An APA and SAMHSA Initiative



11

## FEEDBACK

Please help us improve the Clozapine & LAI Virtual Forum by completing this survey:

<http://smiadviser.org/forumfeedback>



## Pre-submit Cases

[www.smiadviser.org/vfcases](http://www.smiadviser.org/vfcases)

## UPCOMING VIRTUAL FORUM

10/4/23 @4:00-4:45pm ET

Debrief on New LAIs

For additional questions and resources – join the Clozapine and LAI Centers of Excellence Exchange Community

- [www.smiadviser.org/cloz\\_lai\\_signup](http://www.smiadviser.org/cloz_lai_signup)

An APA and SAMHSA Initiative



12