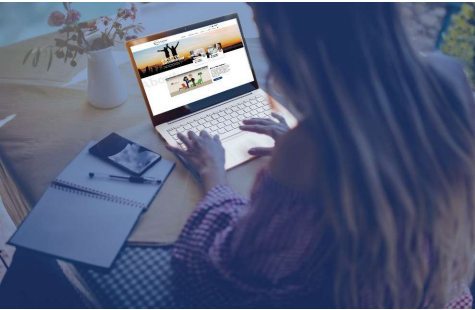


WELCOME



Clozapine & LAI Virtual Forum

June 2023 | 4:00 – 4:45 pm ET

The Clozapine & LAI Virtual Forum is an all-new, peer-to-peer, interactive dialogue between psychiatrists, nurse practitioners, and other prescribing clinicians.

It is informal, no registration required — just join our Zoom call and share your challenges and questions on the month's trending topic around either clozapine or LAIs.

TODAY'S TOPIC:

Update on the Long-Acting Injectable Antipsychotic Medications

MODERATORS

Robert Cotes, MD

SMI Adviser Physician Expert; Emory University

Dr. Robert Cotes, MD, is an Associate Professor at Emory University School of Medicine in the Department of Psychiatry and Behavioral Sciences. He has interest in clozapine, characterizing persistent symptoms of schizophrenia, understanding cardiometabolic side effects of antipsychotic medications, and first episode psychosis.

Donna Rolin, PhD, APRN

SMI Adviser Nursing Expert; University of Texas, Austin

Dr. Donna Rolin is Clinical Associate Professor and the Director of the Psychiatric Mental Health Nurse Practitioner program at the University of Texas with 23 years of experience in psychiatric nursing, including inpatient, community, forensic, and older adult settings.

Megan Ehret, PharmD, MS, BCPP

SMI Adviser Pharmacy Consultant, University of Maryland

Dr. Megan Ehret is a Professor at University of Maryland School of Pharmacy in the Department of Practice, Sciences, and Health Outcomes Research and is Co-Director of the Mental Health Program. She is a Past-President of the American Association of Psychiatric Pharmacists. Her current interests include psychotropic medication adherence and the incorporation of the psychiatric pharmacist in practice.

Discussion Questions for Virtual Forum: Update on the Long-Acting Injectable Antipsychotic Medications

- Which antipsychotics do you routinely use in practice?
- If you were able to create a new long-acting injectable antipsychotic medication, what characteristics would you want the product to have?
 - Administration Interval?
 - Injection site and volume?
 - Preparation technique?
 - Oral overlap?
 - Ease of initiation? Loading dose?

Abilify Asimtufii®

- Indications: Schizophrenia, Bipolar I Maintenance
- Delivery Vehicle: Aqueous suspension
- Half-Life: not calculated
- Tmax: 1 to 49 days
- Drug Interactions: same as oral; CYP2D6 Poor metabolizers, CYP3A4 inducers and inhibitors, CYP2D6 inhibitors

Abilify Asimtufii® [package insert]. Tokyo, Japan: Otsuka Pharmaceutical Co., LTD.;2023.

Abilify Asimtufii® Dosing

- Every 56 days
- Oral overlap: oral medication required for 14 consecutive days

Dose Conversion of Oral Aripiprazole to Abilify Asimtufii®

Oral Dose	Abilify Maintena® Dose	Abilify Asimtufii® Dose
15 mg aripiprazole	300 mg aripiprazole monohydrate	720 mg
20 mg aripiprazole	400 mg aripiprazole monohydrate	960mg

Abilify Asimtufii® [package insert]. Tokyo, Japan: Otsuka Pharmaceutical Co., LTD.;2023.

VA Pharmacy Benefits Management Services. (2016). *Aripiprazole long-acting-injection (Abilify Maintena, ARISTADA) [National Drug Monograph]*.

American Psychiatric Association. (2020). The American Psychiatric Association Practice Guideline for the Treatment of Patients With Schizophrenia.

American Psychiatric Association Publishing. <https://doi.org/10.1176/appi.books.9780890424841>

Abilify Maintena. Available at: https://smiadviser.org/knowledge_post/what-is-abilify-maintena. Accessed: 2/9/23.

Abilify Asimtufii® Missed Doses

Time Frame	Dosing Information
>8 weeks and < 14 weeks:	Administer the next dose as soon as possible
>14 weeks:	Restart concomitant oral aripiprazole for 14 days with the next administered injection

Abilify Asimtufii® [package insert]. Tokyo, Japan: Otsuka Pharmaceutical Co., LTD.;2023.

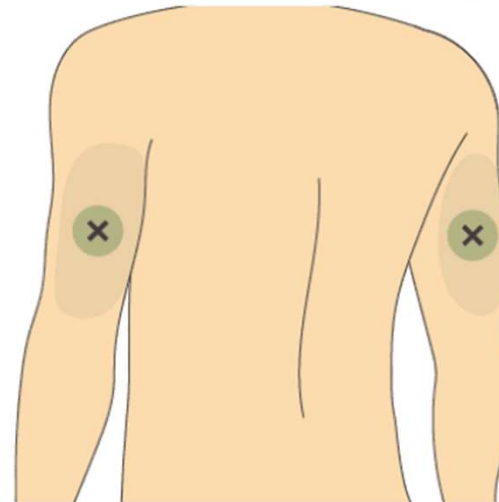
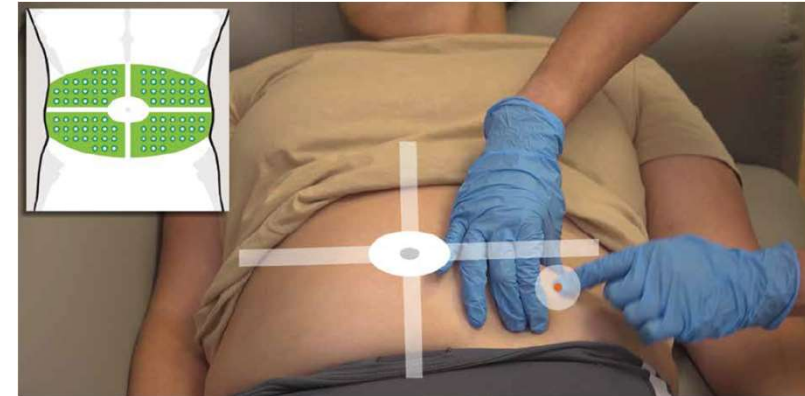
Preparation and Administration

- Pre-filled syringe
- Gluteal IM injection
- No refrigeration required
- Use only needles and syringes provided within the kit
- Tap syringe at least 10 times on hand
- Shake the syringe vigorously for at least 10 seconds

Abilify Asimtufii® [package insert]. Tokyo, Japan: Otsuka Pharmaceutical Co., LTD.;2023.

Perseris®

- New injection site:
 - Subcutaneous in abdomen
 - Subcutaneous in back of upper arm



Rykindo®

- Delivery Vehicle: Microspheres
- Half-Life: 3-6 days
- Tmax: 14-17 days
- Drug Interactions: CYP3A4 Inducers, CYP2D6 Inhibitors

Rykindo® [package insert]. Shandong Luye Pharmaceutical Co., Ltd; January 2023.

Rykindo[®] Dosing

- Every 14 days
- Oral overlap: 7 days of oral risperidone
- No current guidelines on dosing conversions

Rykindo[®] [package insert]. Shandong Luye Pharmaceutical Co., Ltd; January 2023.

Rykindo® Missed Doses

- Patient should receive the next dose as soon as possible and supplement with oral risperidone as needed

Rykindo® [package insert]. Shandong Luye Pharmaceutical Co., Ltd; January 2023.

Preparation and Administration

- Reconstitution and refrigeration required
- Gluteal IM injection

Rykindo® [package insert]. Shandong Luye Pharmaceutical Co., Ltd; January 2023.

Uzedy™

- Delivery Vehicle: Aqueous Suspension
- Half-Life: 14-22 days
- T_{max}: 8-14 days
- Drug Interactions: CYP3A4 Inducers, CYP2D6 Inhibitors

Uzedy™ [package insert]. Parsippany, NJ: Teva Neuroscience, Inc.;2023.

Uzedy™ Dosing

- Every 28 or 56 days
- Oral overlap: Not required

Dose Conversion of Oral Risperidone to Uzedy™		
Oral Dose	LAI Dose- Every 28 days	LAI Dose- Every 56 days
2 mg risperidone daily	50 mg	100 mg
3 mg risperidone daily	75 mg	150 mg
4 mg risperidone daily	100 mg	200 mg
5 mg risperidone daily	125 mg	250 mg

Uzedy™ [package insert]. Parsippany, NJ: Teva Neuroscience, Inc.;2023.

Uzedy™ Missed Doses

- Patient should receive the next dose as soon as possible

Uzedy™ [package insert]. Parsippany, NJ: Teva Neuroscience, Inc.;2023.

Preparation and Administration

- Requires reconstitution and refrigeration (may store for up to 90 days in its unopened original packaging at room temperature)
- Abdomen or upper arm injection; subcutaneously
- Flick syringe forcefully three times to move the bubble to the cap
- Pinch skin, inject needle, unpinch skin, push medication, leave needle in skin for 3 seconds, remove needle

Uzedly™ [package insert]. Parsippany, NJ: Teva Neuroscience, Inc.;2023.

SMI Adviser LAI Center of Excellence

- Clinical Tips
- Educational Webinars
- VF Recordings
- <https://smiadviser.org/about/lai>



Welcome to the Long-Acting Injectable (LAI) Center of Excellence (COE)

SMI Adviser created the LAI COE to promote the safe and effective use of LAIs. The ultimate goal of this effort is to improve the lives of individuals who have schizophrenia, schizoaffective, and bipolar disorders. The LAI COE provides clinicians with training opportunities, technical assistance, and vetted resources. These include:

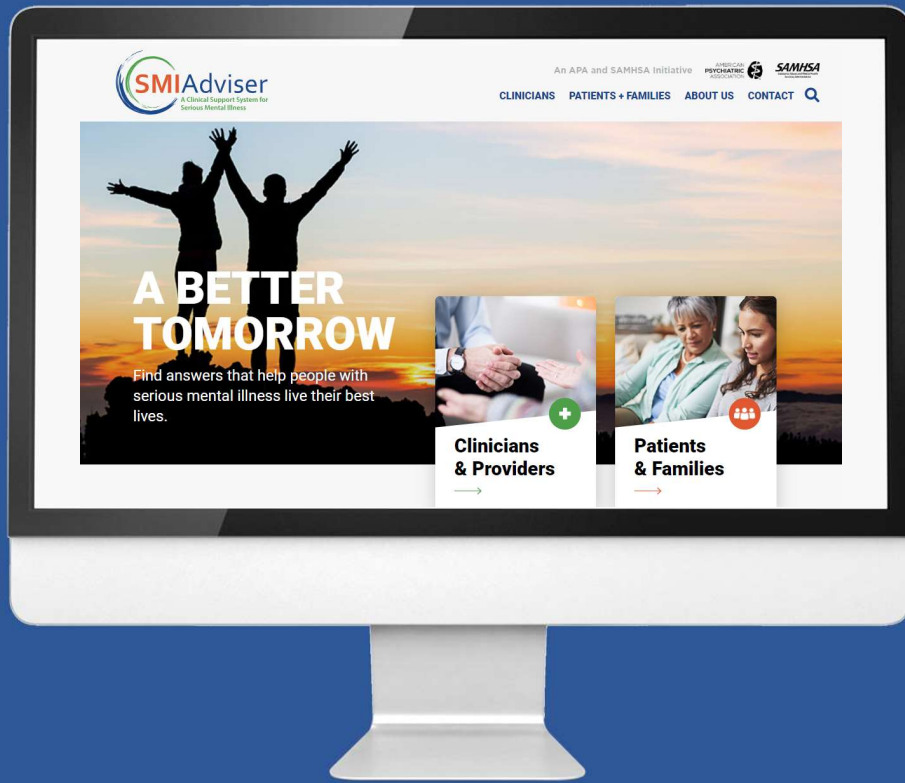
- Live and on-demand webinars
- Virtual Learning Collaboratives
- Virtual Forums
- Email listserv
- On-demand consultations
- Intensive consultation to sites or communities
- Clinical tips and resources

The LAI COE is led by SMI Nursing Expert, Donna Rolin, PhD, APRN, SMI Adviser Physician Expert, Robert Cotes, MD, and SMI Adviser content partner, National Association of State Mental Health Program Directors (NASMHPD), and supported by members of the LAI Workgroup.

For individual and family resources on using long-acting injectables, visit the individual and family [Knowledge Base](#).

FEEDBACK

Please help us improve the Clozapine & LAI Virtual Forum by completing this survey:
<http://smiadvise.org/forumfeedback>



Pre-submit Cases

www.smiadvise.org/vfcases

UPCOMING VIRTUAL FORUM

8/2/23 @4:00-4:45pm ET

Clozapine (topic TBD)

For additional questions and resources – join the Clozapine and LAI Centers of Excellence Exchange Community

- www.smiadvise.org/cloz_lai_signup

An APA and SAMHSA Initiative

