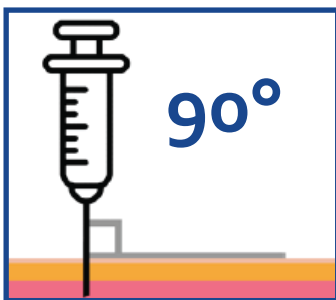
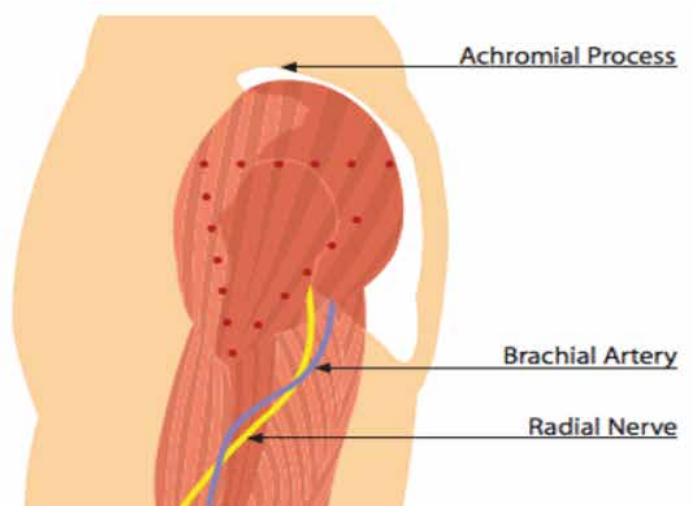
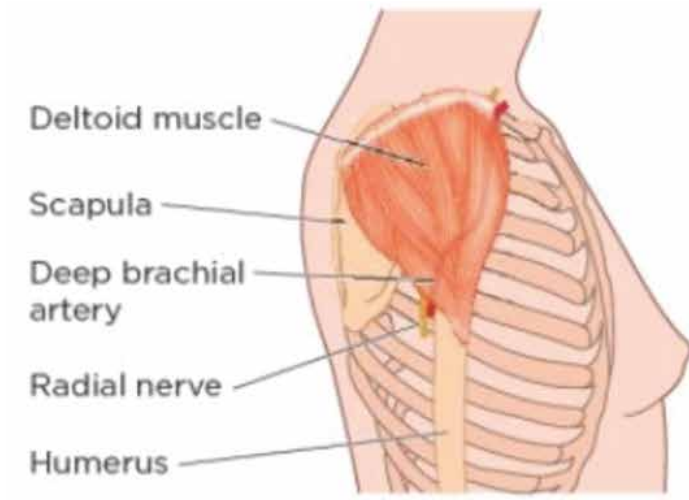


DELTOID INTRAMUSCULAR



Injection angle: 90°

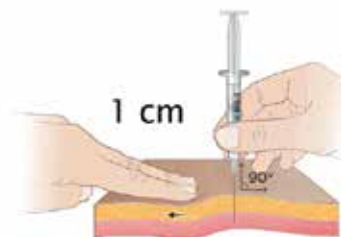
Max volume: 1 mL (recommended). [Can go up to 2 mL depending on body habitus.]

Steps to find the injection site:

1. Find the knobby top of the acromion process
2. Imagine the base of an inverted triangle starting two finger widths below the acromion process (see picture on the right)
3. Give the injection in the center of the inverted triangle, into the deltoid muscle

Aspiration Method: Pull back plunger to check for blood before injecting. [This is advised by FDA for certain injectable medications.]

Z-Track Method: Displace skin layer before injecting to contain injected medication below subcutaneous layer and in the intended muscle.



GRANT STATEMENT

Funding for SMI Adviser was made possible by Grant No. SM080818 from SAMHSA of the U.S. Department of Health and Human Services (HHS). The contents are those of the author(s) and do not necessarily represent the official views of, nor an endorsement by, SAMHSA/HHS or the U.S. Government.